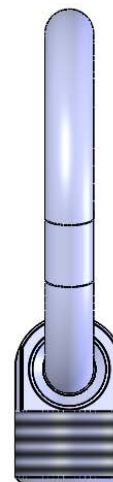
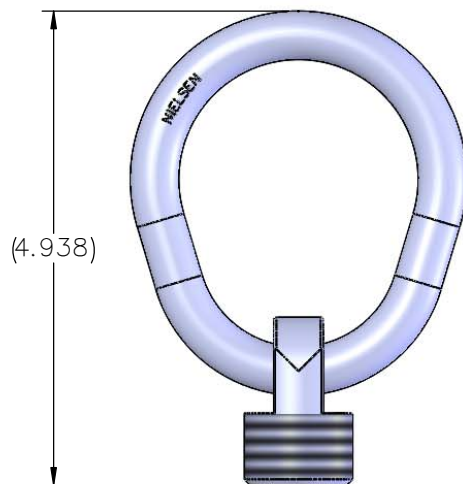
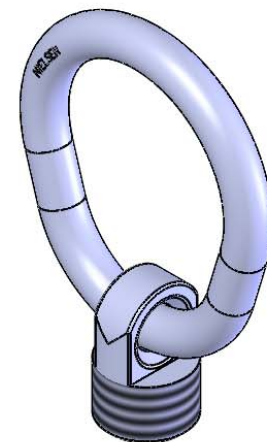
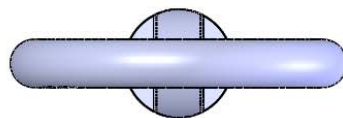


ITEM	PART NUMBER	DESCRIPTION	QTY.
-	12503-00	CARGO RING	X
1	12503-01	RING	1
2	12503-02	STUD	1



NOTES:

- 1 METHOD OF ATTACHMENT OF RING TO STUD IS OPTIONAL. RING MUST BE ABLE TO SWING 180° ABOUT AXIS OF ATTACHEMENT TO STUD.
- 2 MUST BE ABLE TO HOLD 10,000LBS.
- 3 HEAT TREAT AFTER ASSEMBLY TO 35-40 RC.
- 4 REFERENCE: MS21236-2.
- 5 NSN: 1670-00-294-2954.

REMOVE ALL BURRS & SHARP EDGES.
ALL DIMENSIONS ARE IN INCHES
UNLESS OTHERWISE NOTED

TOLERANCES (EXCEPT AS NOTED)
TWO PLACE DECIMALS ±.01
THREE PLACE DECIMALS ±.005
FRACTIONS ±.015
SURFACE ROUGHNESS 63√
ANGLES ±5°

DRWN	TJM	DATE 10/18
CK'D	~	~
APVD	~	~



SCALE: 1:2

UNS NO.
~~

MATL: ~
FINISH: ~

A	ECN 20306; SEE ECN SHEET FOR CHANGES	TJM	.	.
LTR	REVISION	BY	APVD	DATE
TITLE CARGO RING				
CAGE NO.	SIZE	ID CODE	DWG NO.	REV
1RRL5	A	~~	12503-00	A

S
H
1
O
F
1

D

C

B

A

S
H
1
O
F
1