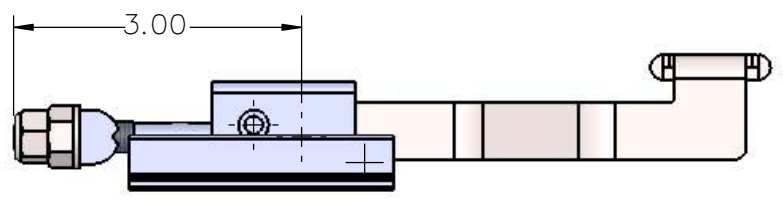
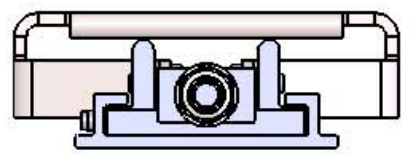
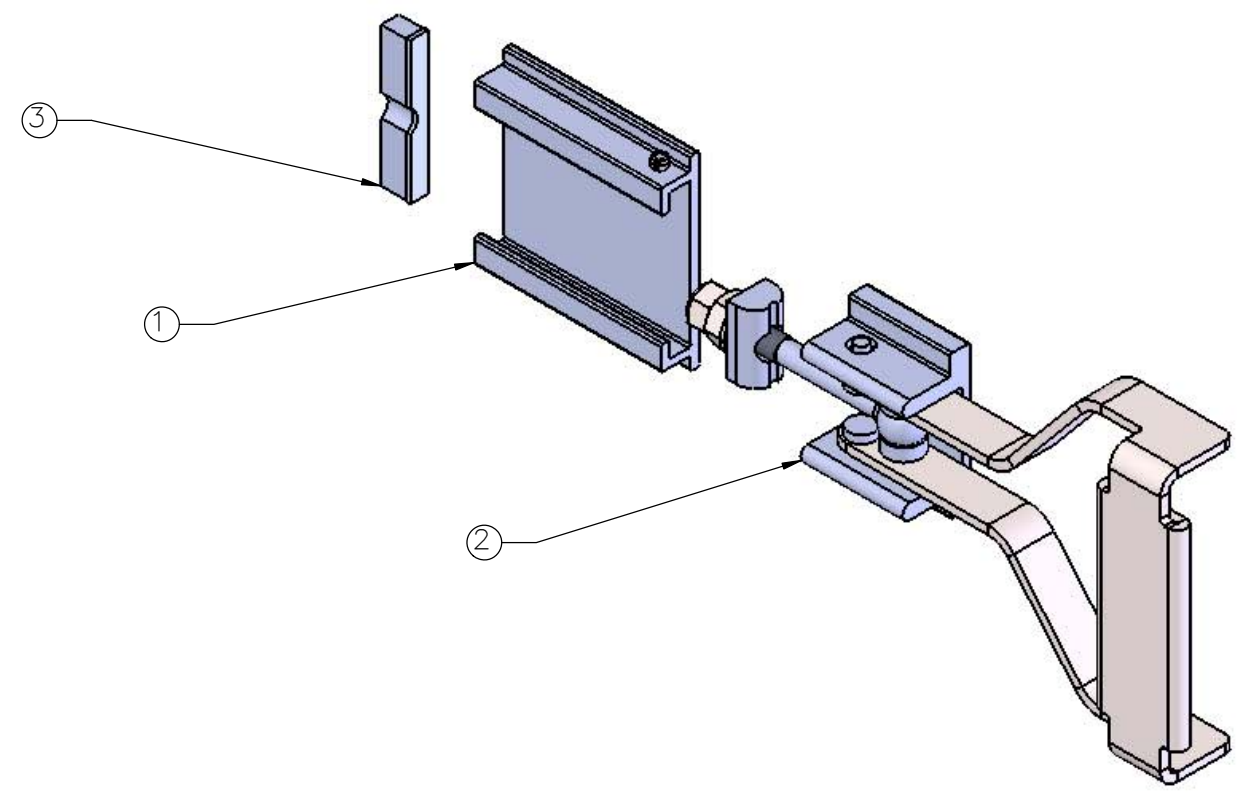
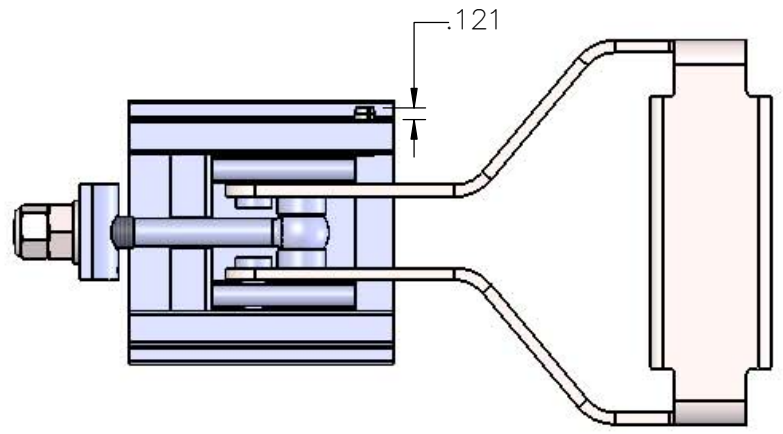


ITEM	PART NUMBER	DESCRIPTION	QTY.	FINISH
-	13027-00	LATCH ASSEMBLY	X	
1	13000-21	BASE/PIN S/A	1	
2	13027-02	HANDLE BOLT ASM	1	
3	13000-13	BACKING PLATE ASSEMBLY	1	

DWG 13027-00
USED ON



SHOWN AS A KIT. BAGGED AND LABELED.
LABEL TO INCLUDE P/N AND CAGE CODE 1RRL5

NOTES:

- FINISH: CLEAR PASSIVATE PER AMS-QQ-P-35, TYPE II.
- CONTROL PRINT 17D058-27

REMOVE ALL BURRS & SHARP EDGES.
ALL DIMENSIONS ARE IN INCHES
UNLESS OTHERWISE NOTED.

TOLERANCES (EXCEPT AS NOTED)

TWO PLACE DECIMALS	±.01
THREE PLACE DECIMALS	±.005
FRACTIONS	±.015
SURFACE ROUGHNESS	63
ANGLES	±5°

DRWN	TJM	DATE
CK'D	~	07/18
APVD	~	~



A	ECN 20262; SEE ECN SHEET FOR CHANGES	TJM	.	.
LTR	REVISION	BY	APVD	DATE
TITLE		LATCH ASSEMBLY		
UNS NO.	MATL: ~	CAGE NO.	SIZE	ID CODE
~	FINISH: ~	1RRL5	B	~
SCALE: 1:2	DWG NO.	REV		
	13027-00	A		